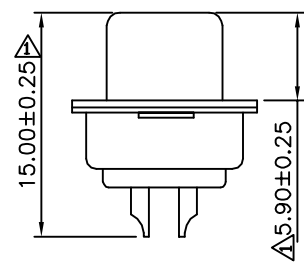
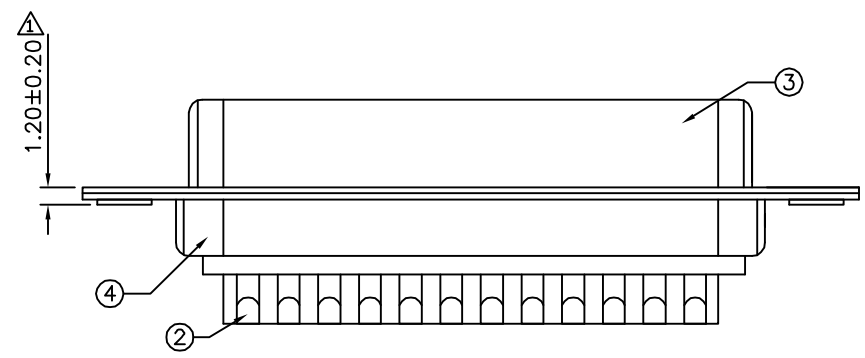
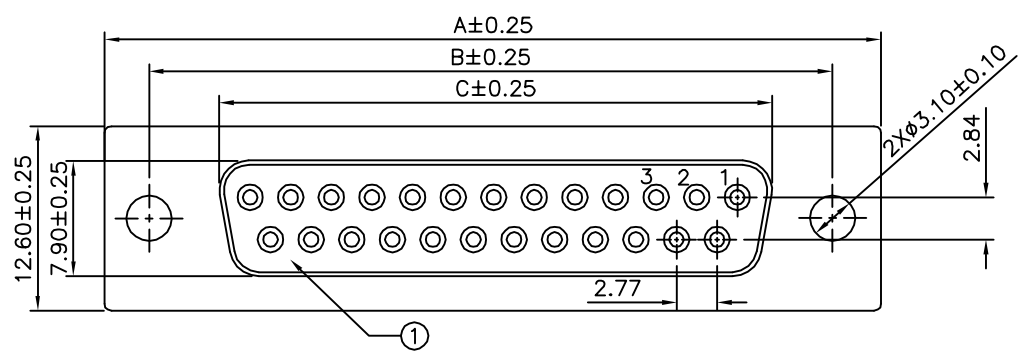


**△ SPECIFICATION**

Current Rating:1A Max.  
 Wthstand Voltage:500V AC For 1 Minute  
 Contact Resistance:30 Milliohms Max.  
 Insulation Resistance:1000 Megaohms Min.  
 At DC 500V  
 Temperature Range:-55°C~+105°C

Pin	Mating Force	Unmating Force
09	5.5 Kgf Max.	1.7 Kgf Min.
15	6.5 Kgf Max.	1.9 Kgf Min.
25	7.5 Kgf Max.	2.7 Kgf Min.
37	9.0 Kgf Max.	3.2 Kgf Min.

RoHS Compliant



**△**

Pin	A	B	C
09	30.80	25.00	16.30
15	39.20	33.32	24.70
25	53.05	47.04	38.38
37	69.40	63.50	54.80

**△**

No.	Name	Material	Q'ty	Remark
④	Back-Shell	Cold Rolled Steel	1	Tin Plated Over Copper
③	Front-Shell	Cold Rolled Steel	1	Nickel Plated Over Copper
②	Contact	Brass	—	Gold Flash Over All,Over Nickel
①	Housing	PBT	2	UL94V-0,Blue



DRAWING No. 03277

APPROVED BY EMILY  
 CHECKED BY HZF  
 DRAWING BY GAO

UNLESS OTHERWISE SPECIFIED TOLERANCES ARE  
 △ .X ±0.30  
 △ .XX ±0.20  
 △ .XXX ±0.10  
 ANG. ±1°  
 UNIT mm

NO.	REV.	REVISIONS	CHK	DATE
△ A1		Modify Data	HZF	08/19/2013
△ A0		NEW RELEASE	SHIN	03/11/2007

SCALE NONE REV. A1