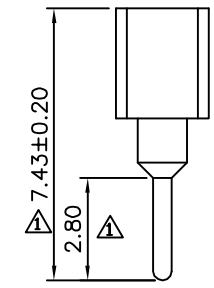
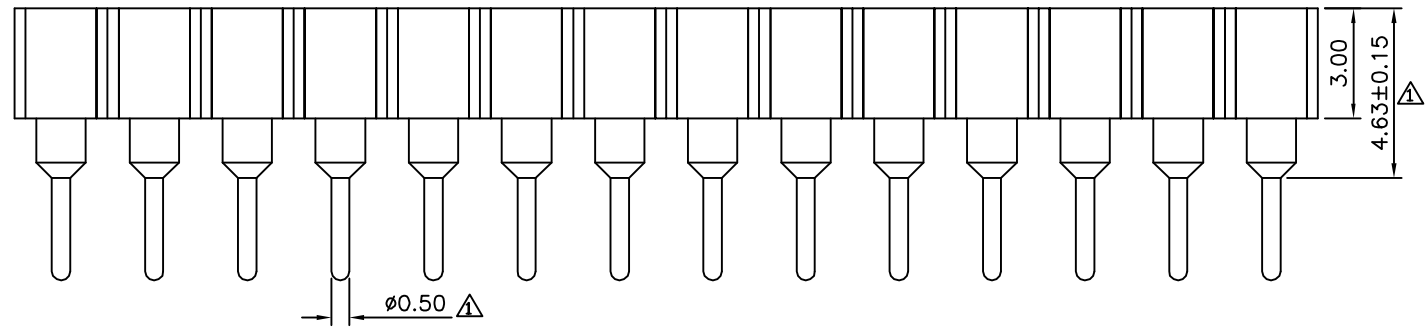
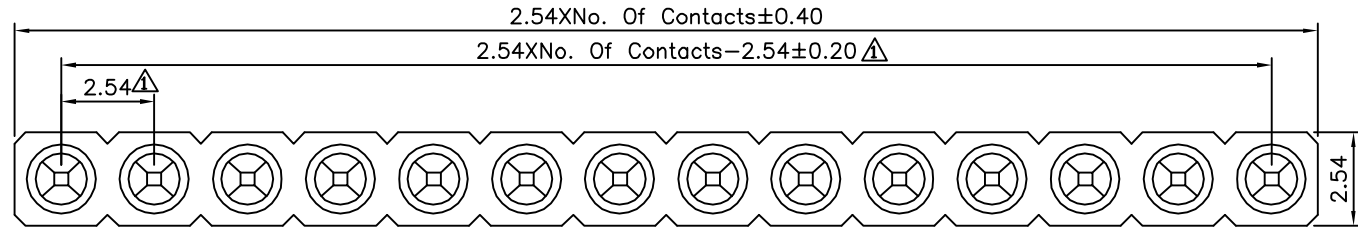
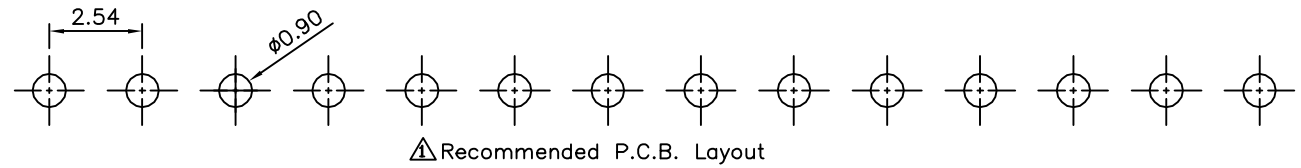


△△ SPECIFICATION

Current Rating:3 Amps/Contact Max.
 Contact Resistance:4 Milliohms/Contact Max.
 Insulation Resistance:1000 Megaohms Min. At 100V
 Operation Voltage:60V AC/DC
 Average Insertion Force With Steel Pin Of
 $\phi 0.43\text{mm}$:<250g
 Average Withdrawal Force With Steel Pin Of
 $\phi 0.43\text{mm}$:>90g Min.
 Mechanical Life Cycle:200 Min.
 Operation Temperature:Gold Plated:-55°C~+105°C
 Tin Plated:-40°C~+105°C
 Soldering Temperature:+260°C,10s Max.
 Pin(Outer Sleeve):Brass,Machined CuZn38Pb2
 Tin Plated Over Nickel
 Clip(Contact 4 Finger):Beryllium Copper,Heat Treated
 Gold Plated Over Nickel
 Insulator(Housing):PPS(UL94V-0),Black
 RoHS Compliant



DRAWING No.		APPROVED BY		UNLESS OTHERWISE SPECIFIED TOLERANCES ARE X. ±0.50 X ±0.30 .XX ±0.20 .XXX ±0.10 ANG. ±5°
05957		EMILY		
		HZF		
		DRAWING BY		UNIT mm
		WZL		
SCALE	NONE	REV.	A2	

NO.	REV.	REVISIONS	CHK	DATE
△ A2		Modify Data	HZF	03/14/2011
△ A1		Modify Data	HZF	07/30/2009
△ A0		NEW RELEASE	HZF	07/11/2005