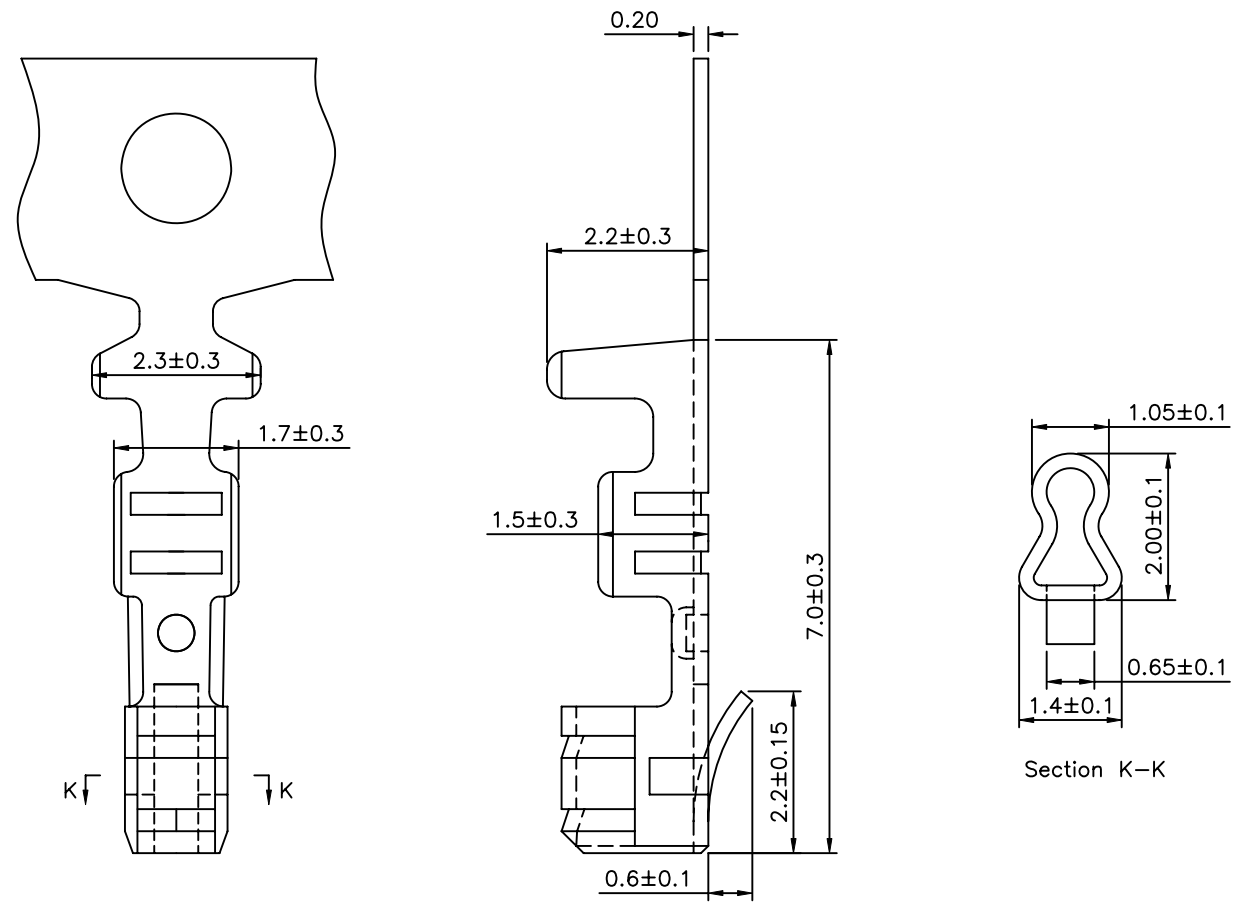


SPECIFICATION
 Current Rating:3A AC/DC
 Voltage Rating:250V AC/DC
 Applicable Wire Range:AWG #22~28
 Accepts With ϕ 0.7mm Round Pin
 Material:Phosphor Bronze,Tin Plated
 Q'ty:10K PCS/Reel
 RoHS Compliant



DRAWING No.		APPROVED BY		UNLESS OTHERWISE SPECIFIED TOLERANCES ARE 1~10 ± 0.2 10~20 ± 0.3 20~40 ± 0.4 40~ ± 0.5						
01698		EMILY								
		CHECKED BY								
		HZF								
		DRAWING BY								
		WZL								
SCALE	NONE	REV.	A0	UNIT	mm	NO.	REV.	REVISIONS	CHK	DATE
						A0		NEW RELEASE	HZF	09/04/2010